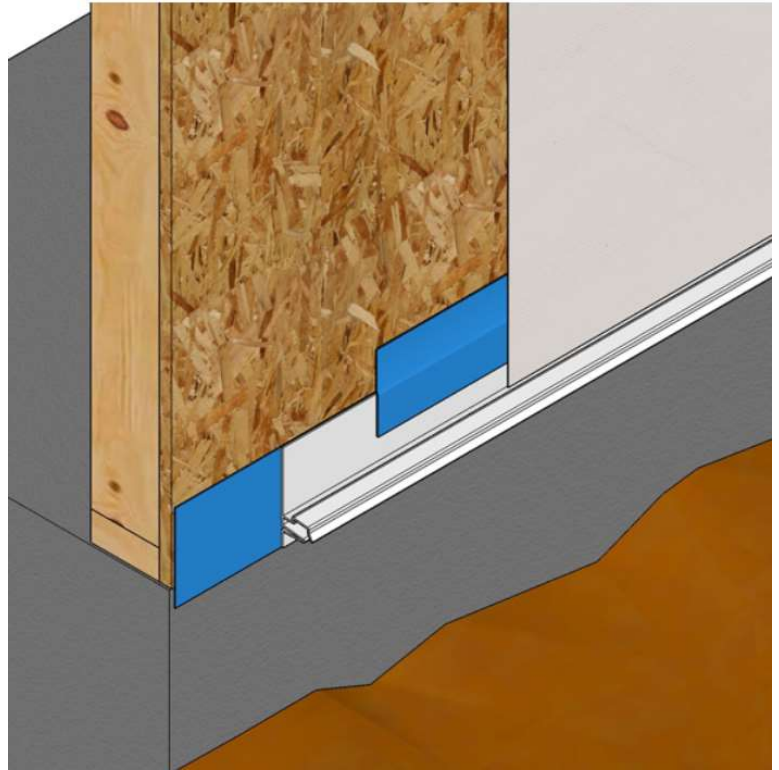


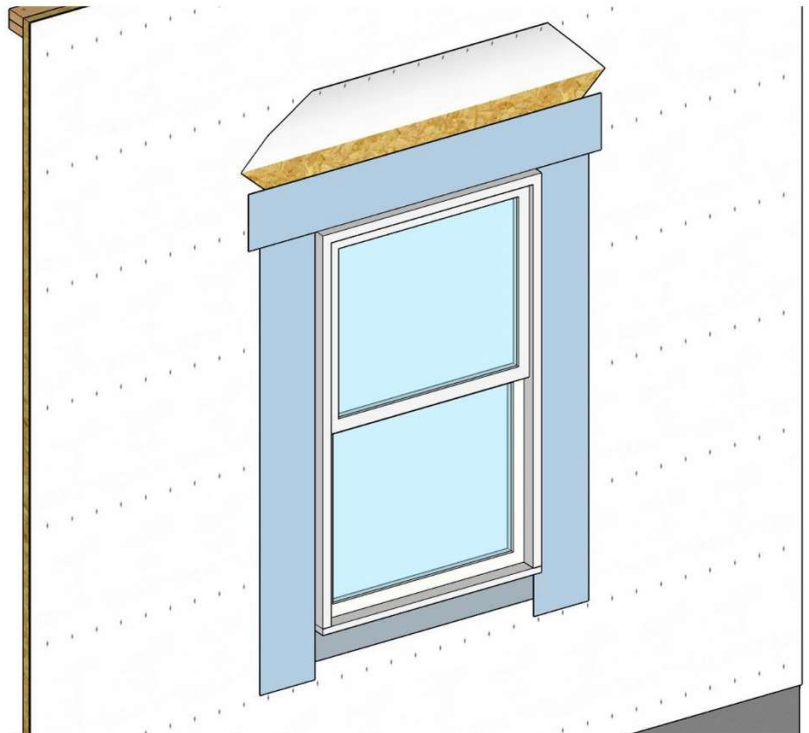
Step 1

The weather resistant barrier (WRB) must be properly installed and overlap the foundation by 1 inch. The Drain Screed must be installed under WRB at wall-to-foundation and at roof-to-wall intersections. All flatwork, or grading, must be 2 inches below Drain Screed. All corners are to be cut with a miter saw. The frame to foundation transition should be weatherized with 4 inch flashing tape.



Step 2

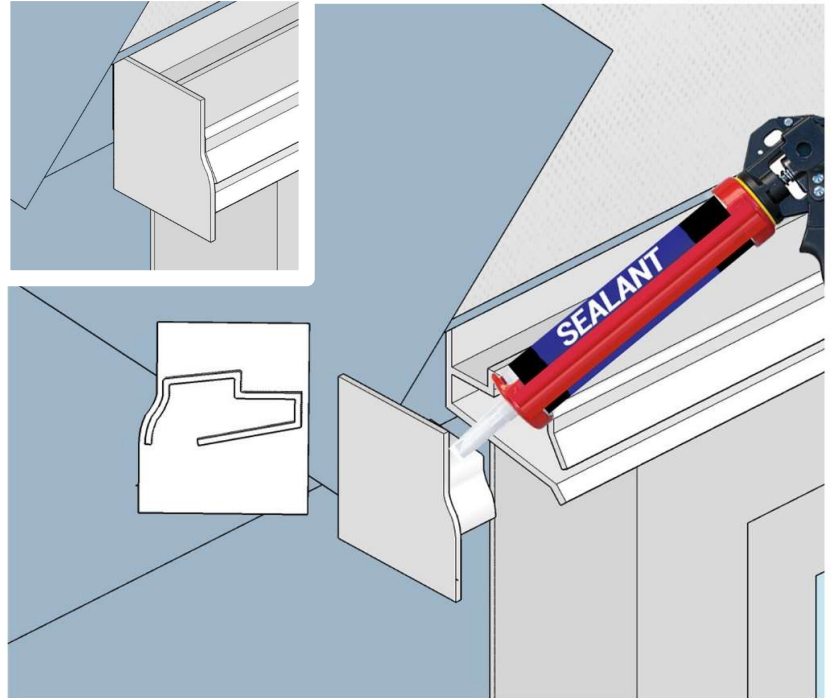
Ensure windows, doors, and other penetrations are properly flashed and integrated with the weather resistant barrier (WRB), per ASTM E2112 (<https://www.astm.org/Standards/E2112.htm>).



Step 3

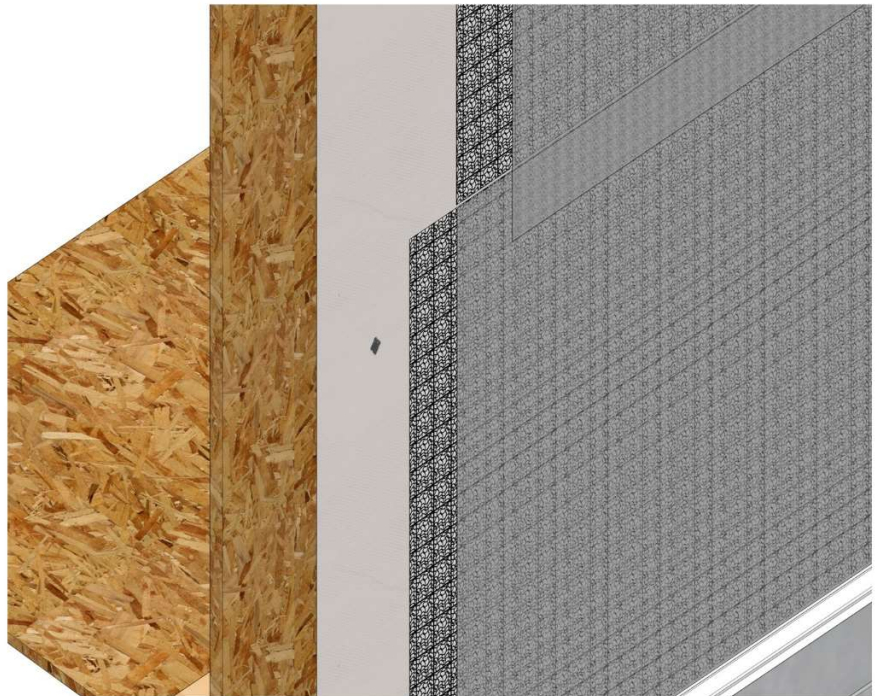
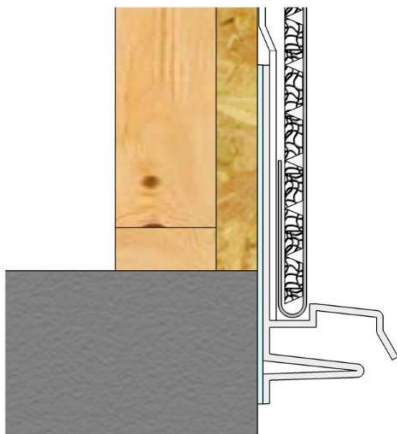
Above windows and doors, install Drip Edge under the WRB, per ASTM E2112 (<https://www.astm.org/Standards/E2112.htm>), with self adhesive flashing over the top edge.

Cut Drip Edge and install End Caps prior to fastening to wall. Use additional sealant in drain trough and under bottom leg, and tool to create a watertight seal. Center Drip Edge above window, fasten, and flash.



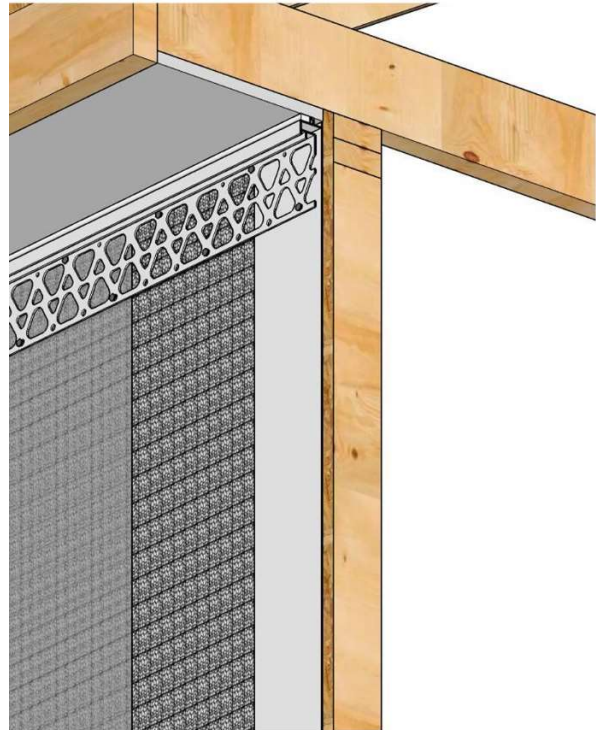
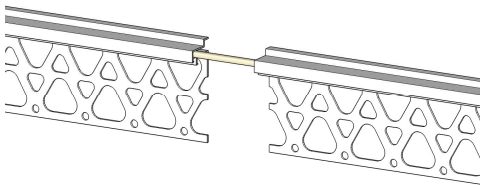
Step 4

The rainscreen is installed shingle style and continuous over the WRB. Butt the rainscreen at joints and overlap fabric-flap. Fold the fabric-flap under the rainscreen bottom edge at Drain Screenshot to prevent insects from burrowing into the wall cavity.



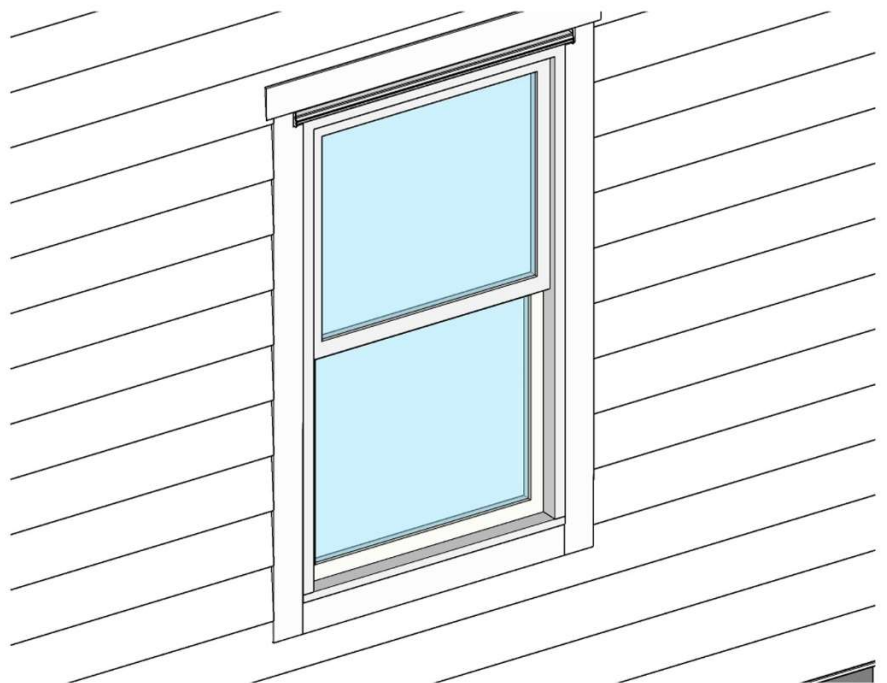
Step 5

E-Z Vent is installed at the top of each wall ON-TOP-OF the rainscreen to allow water vapor to escape and to promote drying through the wall cavity. Use the universal connectors to join E-Z Vent sections together.



Step 6

Install siding according to the manufacturer's specifications. When installing a starter strip along the Drain Screed be sure not to compress the rainscreen. Follow the applicable ASTM guidelines for the type of siding being installed to ensure proper fastener type and length. Pneumatic nails can be used, but care must be taken to prevent over nailing and compression of the rainscreen.



Step 7

Continue to install per manufacturers specifications and seal the E-Z Vent at the top of the wall with ASTM C920 Class 25 sealant.

