

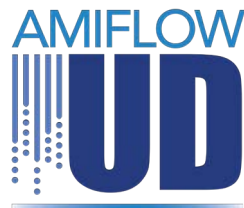


Stucco

Composite/Wood/Vinyl Siding

Engineered/Veneer Stone

Veneer Brick

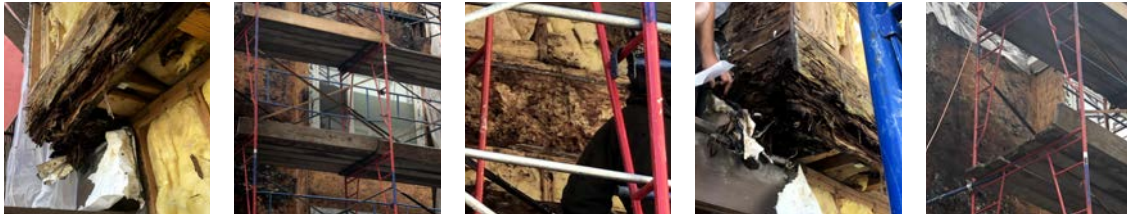


**OUR MOST VERSATILE DRAINAGE PROFILE. USED TO DRAIN ABOVE SILL STONES, ON ROOF PITCHES, AND CLADDING TRANSITIONS.**

AMIFLOW UD vinyl HI-PERFORMANCE trim profiles provide a straight, true, continuous surface that will drain and ventilate the wall cavity. The High Performance trims integrate many features to simplify installation providing guides to help installers maintain the proper thickness. The key feature is the drainable moisture trough which allows rain screen to be inserted to maintain the drainage cavity throughout the wall and allow the water to be released in key areas.



For More Information on the Hydrodry System & Other High Performance Products:  
**AMICOBP.COM ♦ 205.470.9823**



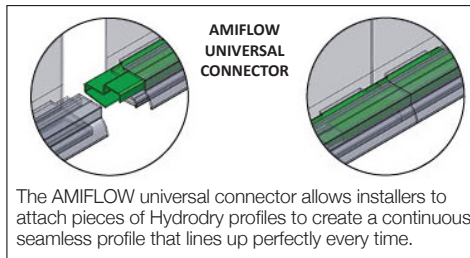
When water or moisture remains in the wall cavity damage, mold and rotting can occur.

## AMIFLOW UD - GETS THE WATER OUT!



AMIFLOW UD's patented drainage slots allow water to flow down the drainage plane and out through the bottom of the wall.

- Large slots drain the wall at cladding transitions, roof pitches, and still stones.
- A drainage trough accommodates rain screen and drainage mats up to 10mm.
- Patented rain screen termination with large slots drain and Ventilate the bottom of the wall.
- Dedicated 7/8" ground provides consistent stucco and mortar thickness.
- Attachment holes are located every 4" to nail at studs on 16" centers.
- Available in white, tan, and gray.



For More Information on the Hydrodry System & Other High Performance Products:

**AMICOBP.COM ♦ 205.470.9823**